

# KMC Honors Collaborative Audition Requirements

**\*\*All applications must be received by June 30.\*\***

## Recording Guidelines

- Recordings should include **BOTH audio AND video** of your performance (i.e., we need to fully see you in the recording). Be sure to record the video in horizontal format.
- State your name at the beginning of video, then introduce each segment prior to its performance. You should submit one recording that contains all required components.
- Check the quality and function of your video prior to submission.
- Due to file size, you must provide a link to your recording (i.e., Google Drive, Dropbox, unlisted YouTube). Email the link to [musiccamp@calvin.edu](mailto:musiccamp@calvin.edu).

## Classical Instrumental Ensembles

Recorded applications must include the following:

1. Designated scales and/or techniques
2. Prepared piece (not to exceed 4 minutes); piano accompaniment optional  
***Please include composer and title.***
3. Designated etude or excerpt

## Jazz Instrumental Ensembles

Recorded applications must include the following:

1. Designated scales and/or techniques
2. Designated improvisation; with provided accompaniment track
3. Designated etude

## Vocal Ensembles

Recorded applications must include the following:

1. Designated sight-reading
2. Prepared art song (not to exceed 4 minutes); piano accompaniment optional  
***Please include composer and title.***

# VOCAL ENSEMBLES

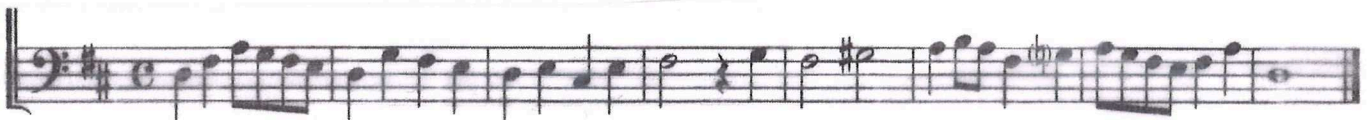
## 1. Designated Sightreading

- The following **process** should be done AFTER starting the recording device:
  1. Rhythm:
    - a. Look at the time signature and determine how many beats are in each measure.
    - b. While keeping a steady beat, perform the rhythm only (either by chanting or singing it on "tee"). **You may only perform this 2 times.**
  2. Pitches:
    - a. Look at the key signature and determine the numbers or solfege for the notes.
    - b. Speak through the numbers or solfege of each note (this does not need to be done in rhythm).
    - c. Perform the exercise in rhythm, singing the pitches on numbers or solfege. **You may only perform this 2 times.**

Soprano/Alto:



Tenor/Bass:



## 2. Prepared Art Song

- This selection should not exceed 4 minutes in duration.
- Performance with piano accompaniment is optional.
- Please announce composer and title prior to performance.