



DASHBOARD INDICATORS

Is Your Engine Running Smoothly?

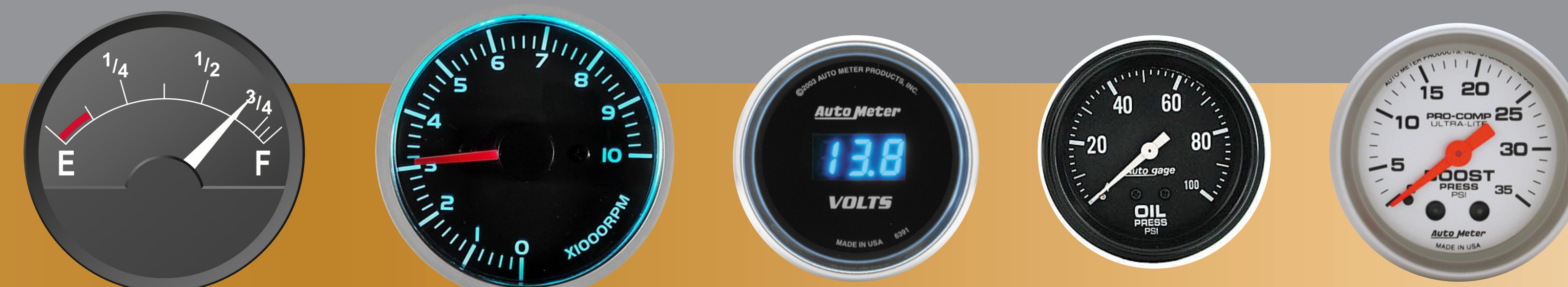
Driving down the road, you keep an eye on your dashboard to make sure your car's systems are operating efficiently and effectively. In a Christian School, we also need to monitor the fuel level in our tank and know if the engine of education is running smoothly.

Rehoboth Christian School desires to set dashboard indicators to benchmark our progress, both internally and externally. This project is to identify which indicators are most useful in measuring our mission.

Rehoboth Christian School's mission is to challenge its students to know the Triune God and equips them to love, serve and transform the world in His name.

Getting To Our Destination

The outcome of this project is a list of indicators that measure the effectiveness of Rehoboth Christian School's mission. These indicators are specific to our school, and only suggestions to other Christian schools. Now that key indicators have been identified, the tracking can begin. The next steps of the project will require data collection from current numbers and research into the past 5-10 years. This will allow us to further refine the indicators and watch for patterns that develop. In order for the dashboard to become an essential tool of the journey, we will need to find the data, share information, transfer ideas and implement necessary changes.



Gauging Success

- Spiritual Formation Assessment
- Student-Led Chapels
- Church Involvement
- Extra-Curricular Activities
- Service Projects
- Prayer Life of Staff
- Grades/Teachers with NWEA Data Folders
- Common Planning Times per month
- Staff Completion of PDP's
- Teacher Retention/Native Staffing
- Parent Volunteerism
- Graduation/College Attendance
- College Completion Rate
- Attendance Rate
- Board Strategic Plan
- Board Self-Study
- Tuition Charged/Collected
- Partnership Endeavors

Learning As We Go

As this project unfolded, it became clear that the engine of a Christian school only runs smoothly if all of the parts are finely tuned. Stakeholders of the school have different elements that they believe are most important to the success of the school, and it is difficult to determine which to track. It is important to keep moving forward and not get slowed down by the complexity of the details. Over time, some indicators may prove to be less critical and others may emerge as critical; the point is to monitor progress and get moving toward your goals.



Rehoboth Christian School
Rehoboth New Mexico
Carol Bremer-Bennett, Superintendent